

Lewisville Watersedge Condominium Association Inc.

November 13, 2013

Re: Lewisville Watersedge future development plans

Dear Homeowner's,

The current development has 57 finished units in building 1 & 2. We have started construction on 12 lake front units (building 3) that will include a common area infinity pool in front of the clubhouse. This building 3 should be completed in late 2014.

We also have plans to build up to the maximum units allowed on *lot 2 blk A*, the parcel of land just as you enter the front gate (see attached Exhibit B).

If you have any further questions please contact Essex Management /Ron Corcoran at 972-428-2030 ext 7310 your earliest convenience.

Thank you,

MMM HOLDINGS, LP/ Declarant
a Texas limited partnership

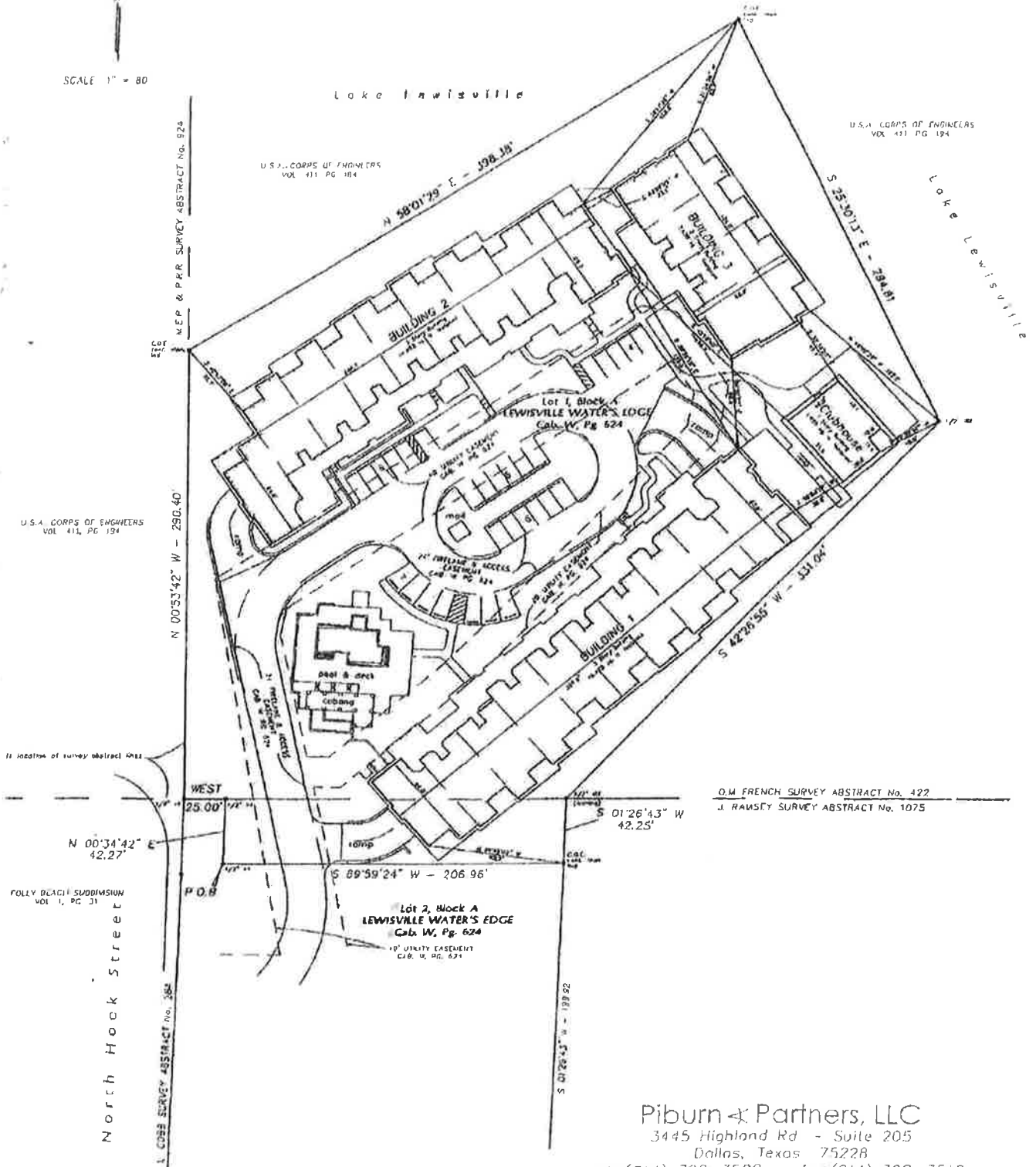


By:
Mehrdad Moayedi,
Authorized Representative

Enc: Exhibit B condo map and building 3 site plan.

EXHIBIT "B" WATER'S EDGE CONDOMINIUMS SITE

SCALE 1" = 80'



U.S.A. CORPS OF ENGINEERS
VOL. 411 PG. 184

U.S.A. CORPS OF ENGINEERS
VOL. 411 PG. 194

U.S.A. CORPS OF ENGINEERS
VOL. 411, PG. 194

O.M. FRENCH SURVEY ABSTRACT No. 422
J. RAMSEY SURVEY ABSTRACT No. 1075

FOLLY BLANCH SUBDIVISION
VOL. 1, PG. 31

Piburn & Partners, LLC
3445 Highland Rd - Suite 205
Dallas, Texas 75228
ph (214) 328-3500 fax (214) 328-3512
email@metrosurveyor.com

DATE 04/26/2007
Project No 06143